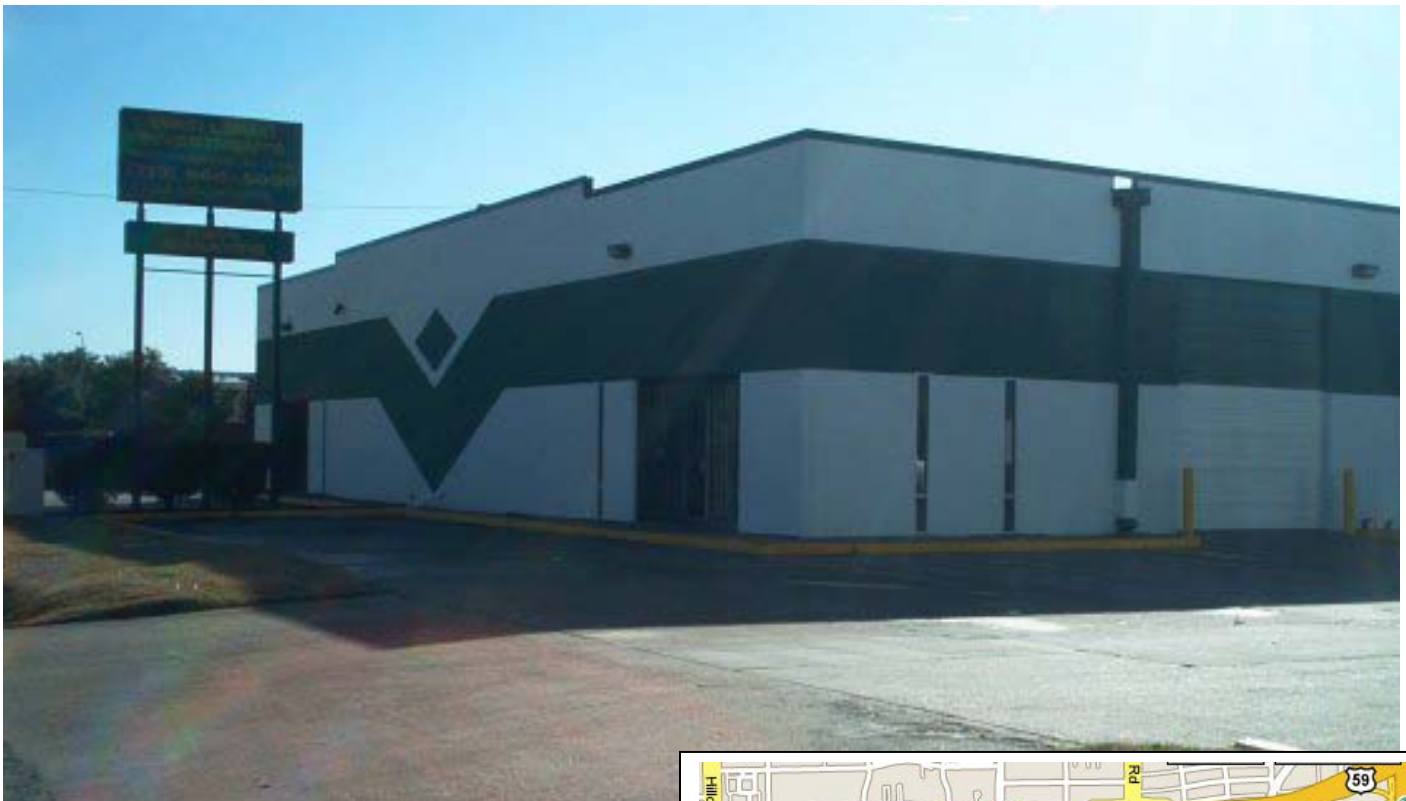


For Lease

2,000 Sq. Ft.

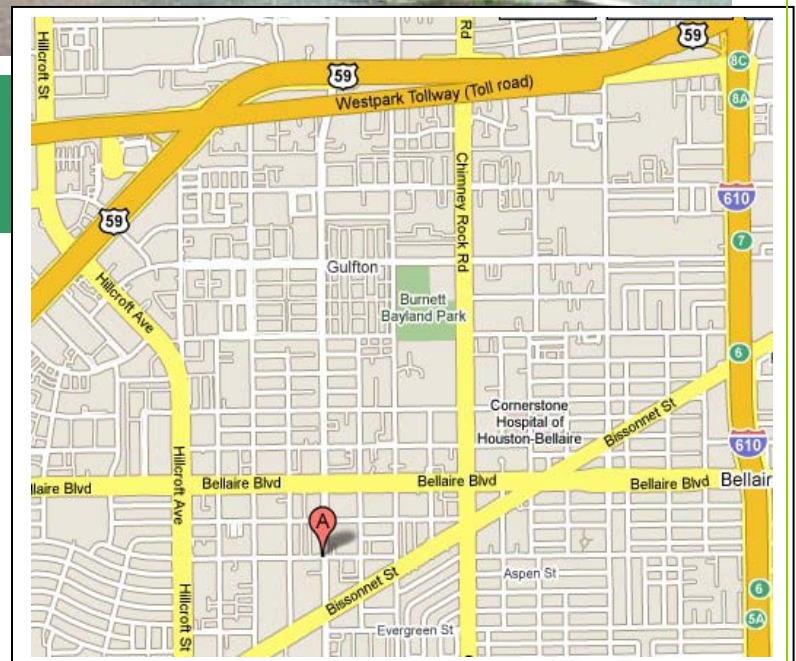


5904 Jessamine, A-18  
Houston, Texas

- Key Map: **531J**
- Square Feet: **2,000**
- Offices/RR: **3 Offices, 2 RR**
- Overhead Doors: **12' x 14'**
- Electrical Service: **110 Volt Single Phase**

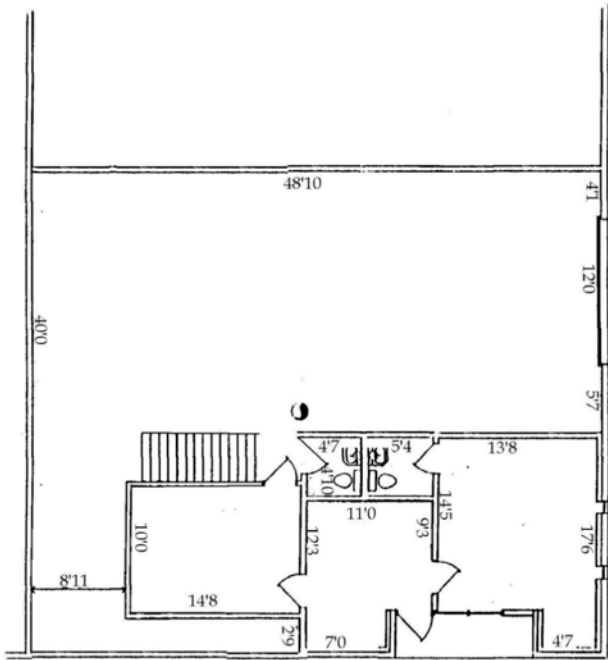
Great location in Southwest Houston with easy access to HWY 59, and 610 Loop.

**Samuel L. Bryant Investments**  
Office Warehouse for Lease



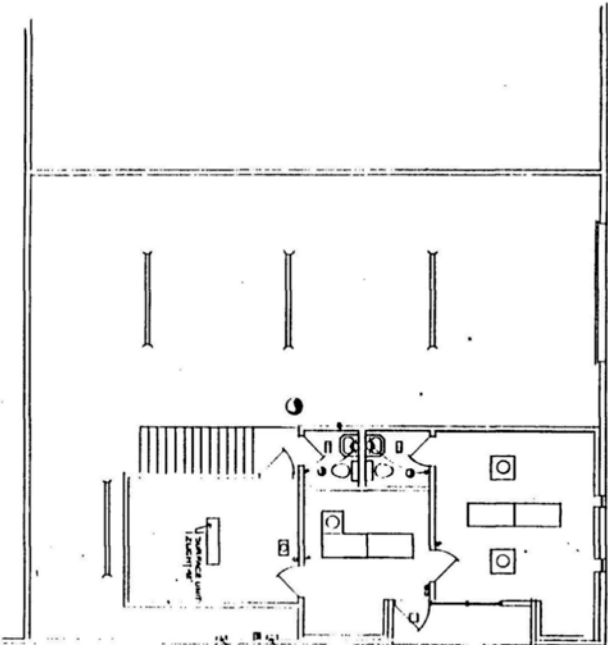
**FOR ADDITIONAL INFORMATION OR TO SCHEDULE A TOUR, PLEASE CONTACT:**

**Wayne F. Wilcox or Ken Keschinger**  
**info@slbinvestments.com**  
**713-660-6000**



FLOOR PLAN

5904 JESSAMINE, A-18



ELECTRICAL PLAN

SAMUEL L. BRYANT 1007	
DATE	10/1/00
SCALE	1/8" = 1'-0"
FLOOR PLAN - ELECTRICAL PLAN	
SUITE-A-18 5904 JESSAMINE, E	