

For Lease

5,850 Sq. Ft.

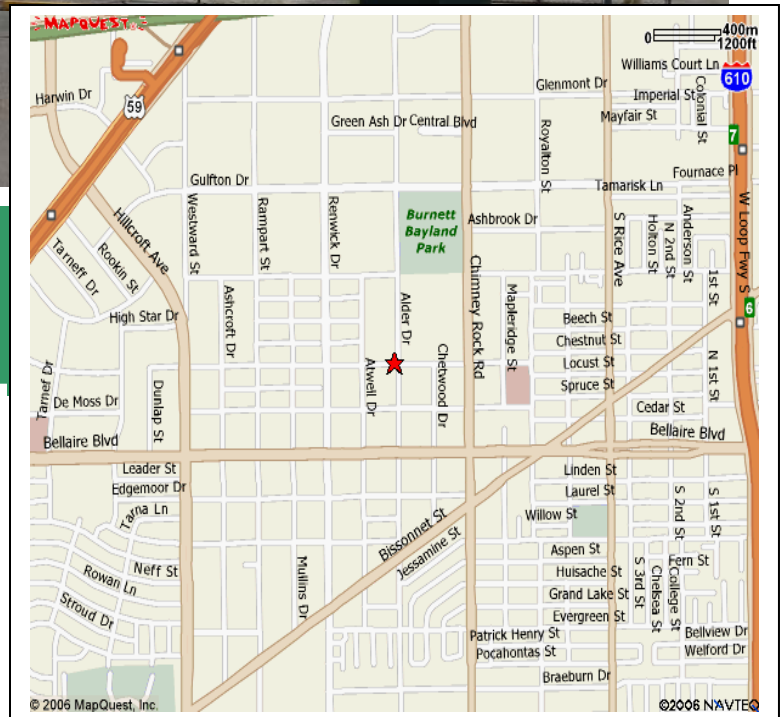


5728 Clarewood Houston, Texas

- Key Map: **531F**
- Square Feet: **5,850**
- Offices/RR: **7 Offices & 2 RR**
- **Break Room**
- Overhead Doors: **One 10' X 12'**
- **5,000 sq. ft. Fenced Yard**
- Electrical: **3 Phase Power**

Great location in SW
Houston with easy access
to HWY 59 and 610 Loop

Samuel L. Bryant Investments
Office Warehouse for Lease



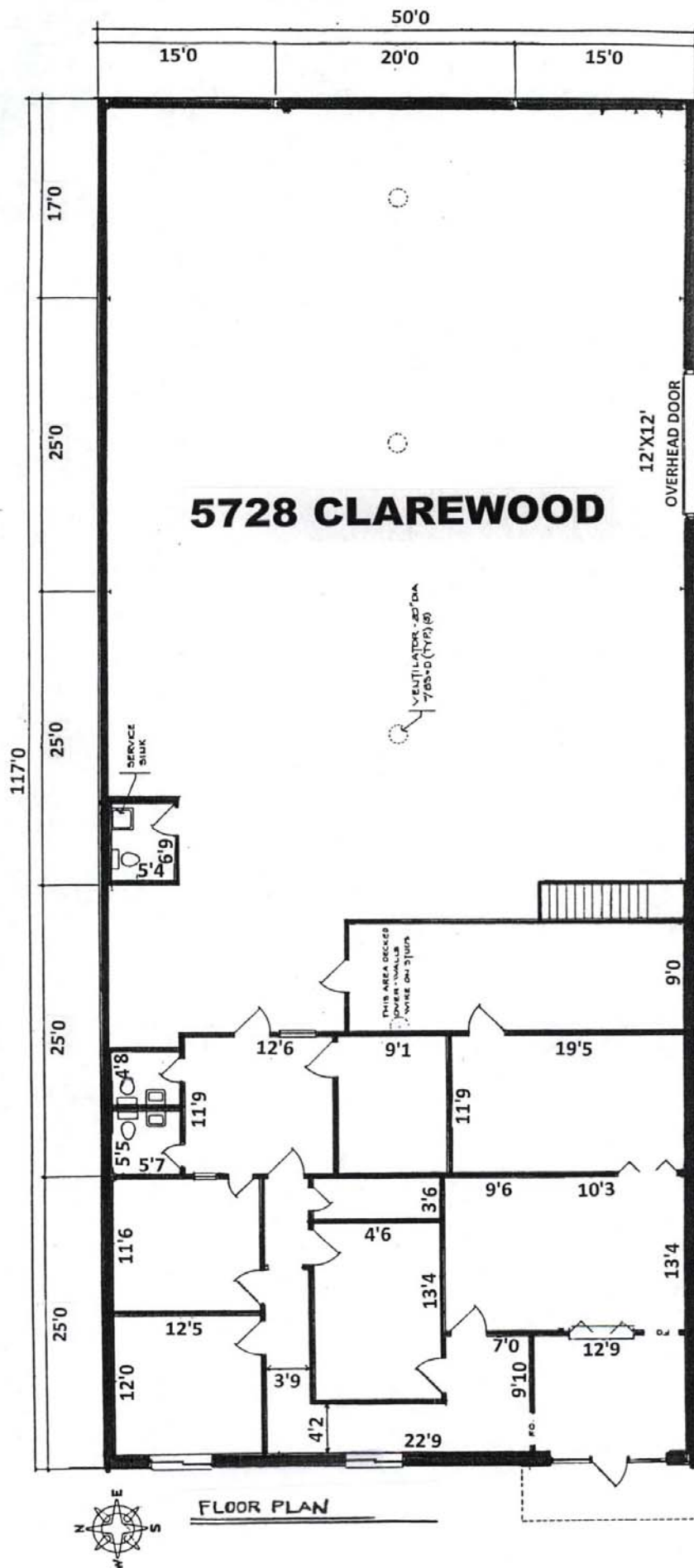
**FOR ADDITIONAL INFORMATION OR TO
SCHEDULE A TOUR, PLEASE CONTACT:**

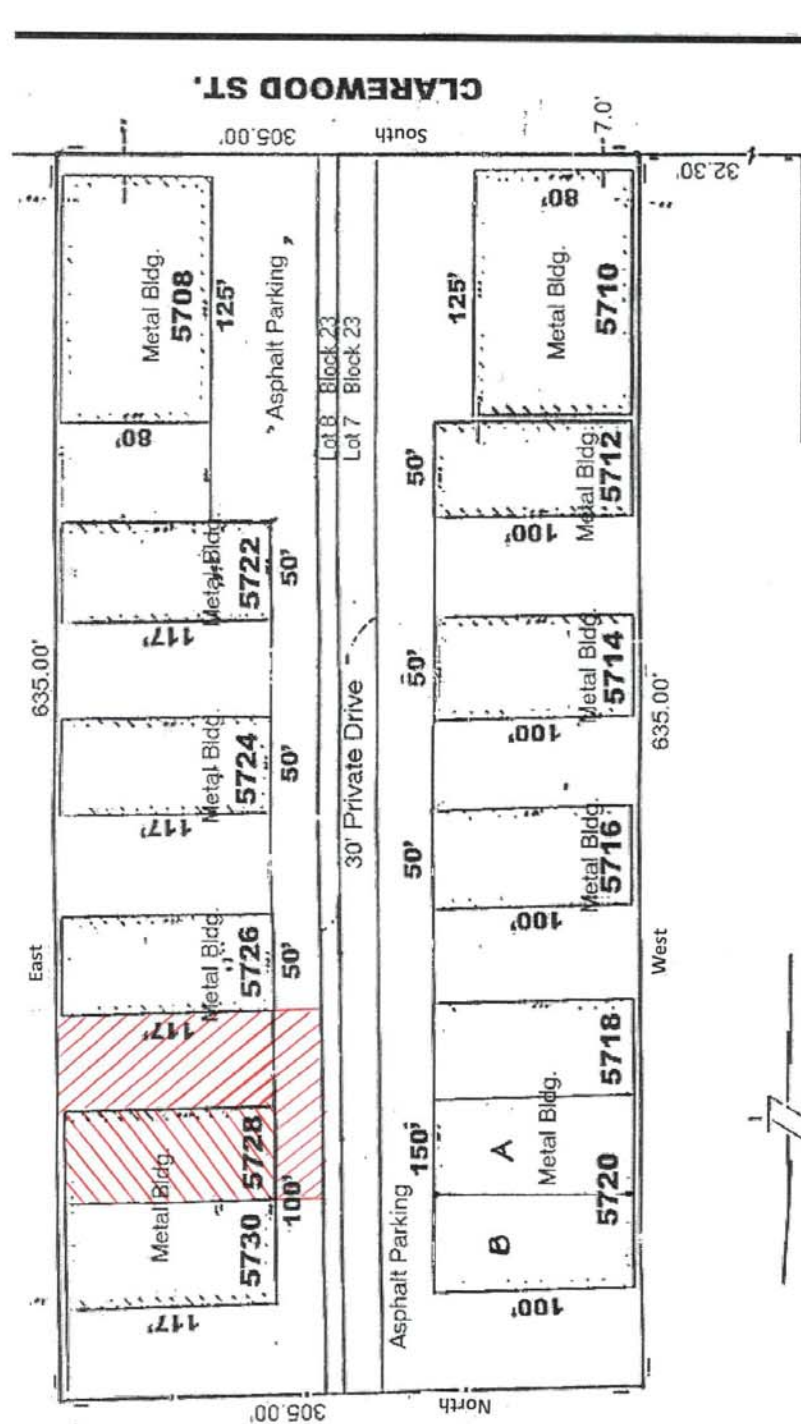
Jeremy Bryant or Ken Keschinger
info@slbinvestments.com
713-660-6000

7700 Renwick Drive, Suite 8-B

Houston, TX 77081

713-660-6000





ATWELL ST.

I, F.G. Huffman, a Registered Public Surveyor in the State of Texas, hereby certify that this plat was made from an actual survey on the ground by me or under my direction, and that no encroachment exist at the time of this survey unless reflected on the above plat and that said plat is true and correct to the best of my knowledge and belief.

SURVEY OF THE EAST 1/2 LOT 7, S 1/4
BLK. 23, WESTMORELAND FARMS, A
Scale: 1"=40' APPROVED BY:
Date: 12-22-77
VOL 3, PG 60
H.G.M.R.

I.F.G. Huffman

I. F. G. Huffman